

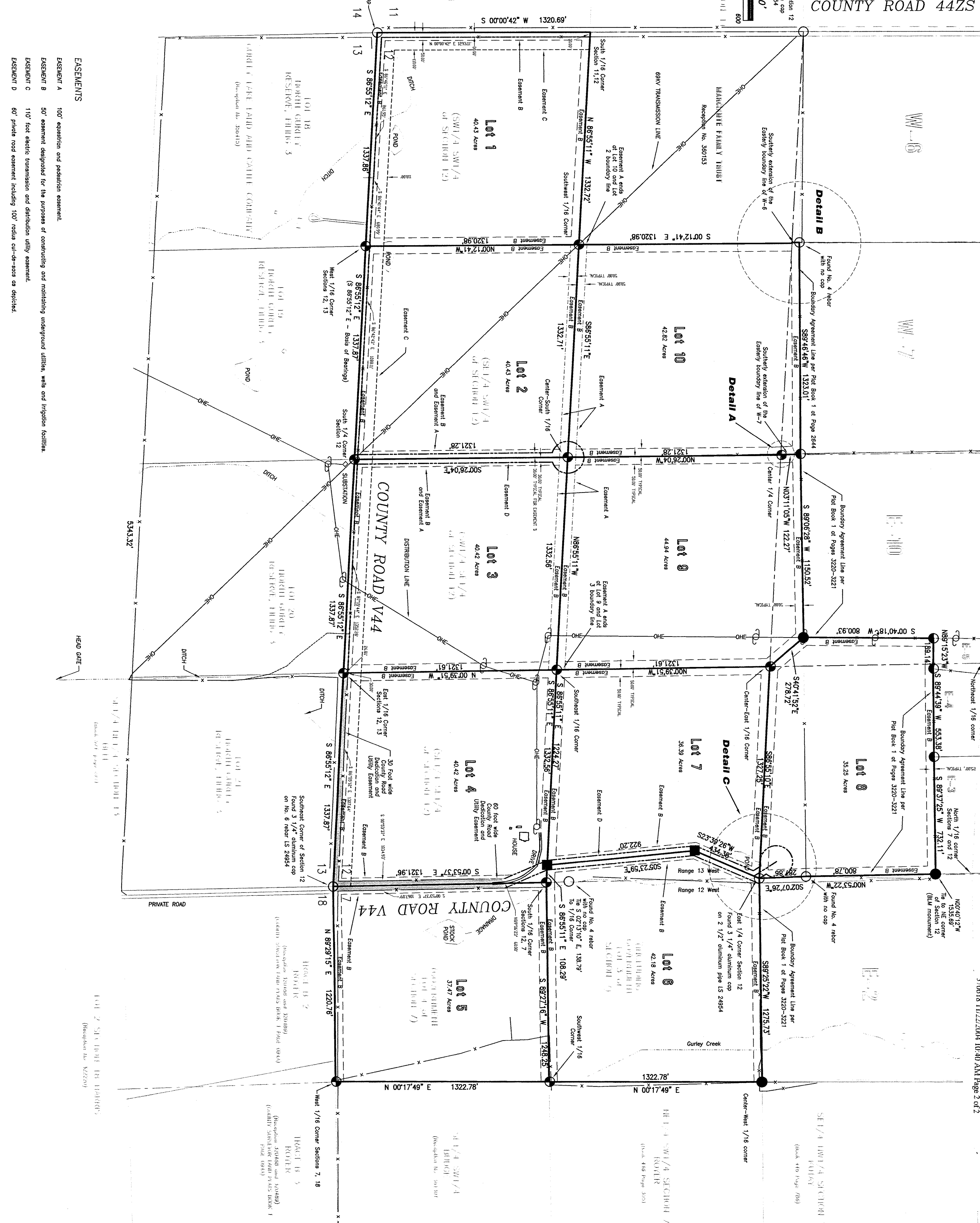
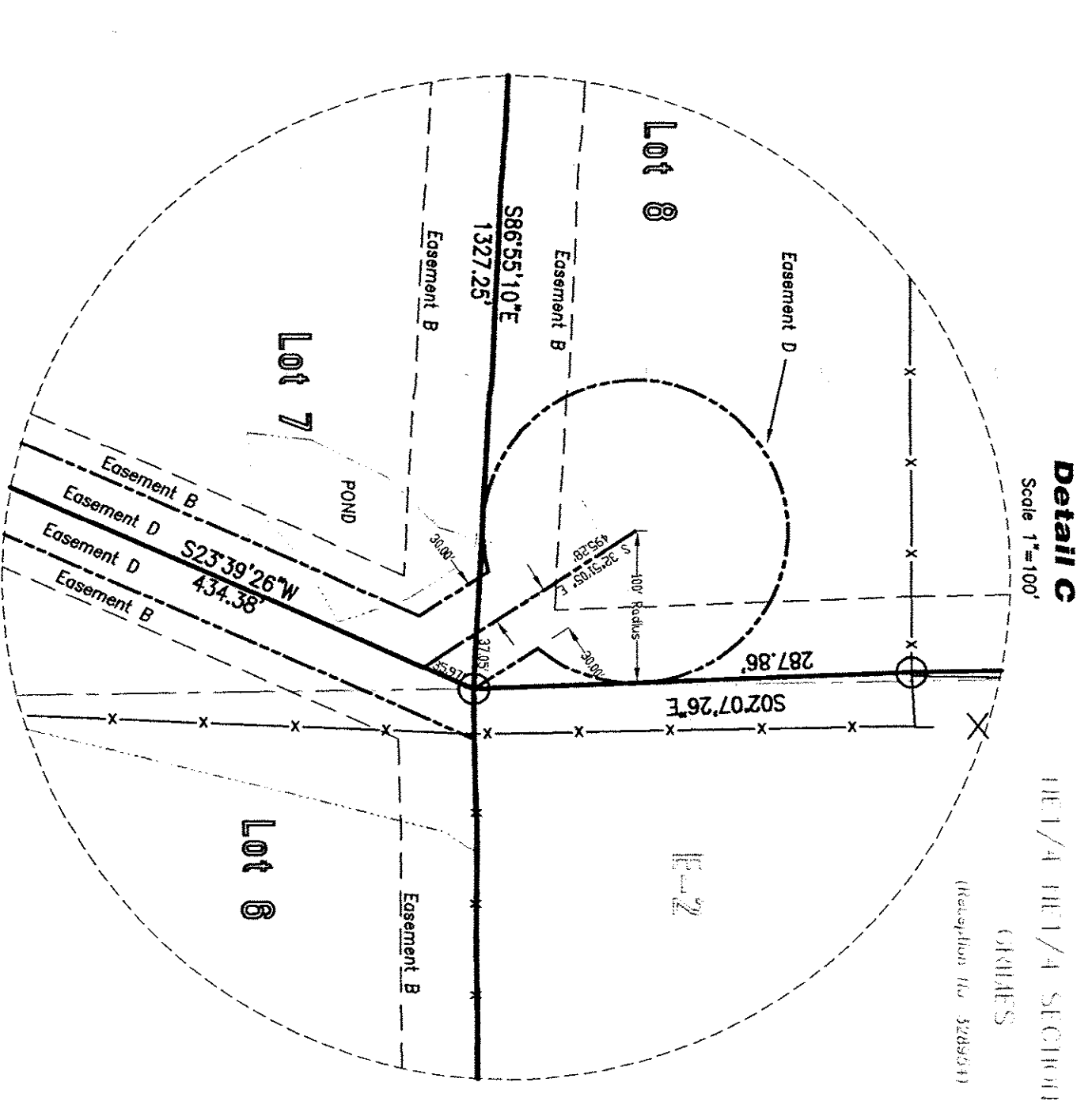
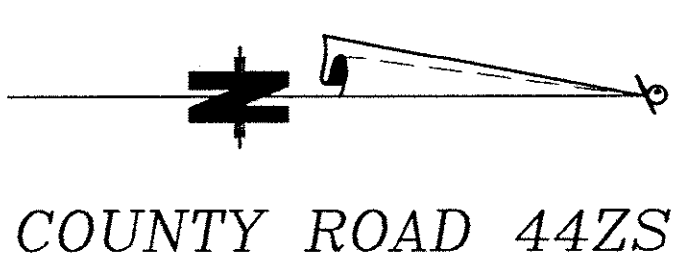
Legend

Section/Alight Lines
 --- Overhead Electric Line
 --- Overhead Telephone Line
 --- X---X---X--- Fence Line
 --- Utility Pole

● Found No. 5 Rebar and 1 1/2" Aluminum Cap LS 24954
 ○ Monument As Described
 ● Found No. 4 Rebar and Cap LS 6868
 ● Found No. 6 rebar and 2" aluminum cap LS 24954
 ● Found No. 5 Rebar and 1 1/2" Aluminum Cap LS 24954

0 100 200 300 400 500 600

SCALE: 1"=300'



GURLEY CANYON RANCH

Located within Section 12, T.44N., R.13W., and Section 7 T.44N., R.12W., N.M.P.M., San Miguel County, Colorado

Project Mgr.:	GF
Technician:	GF
Checked by:	
Start date:	10-13-03

FOLEY ASSOCIATES, INC.
 ENGINEERING PLANNING SURVEYING

970-728-6153 970-728-6050 FAX
 P.O. BOX 1385
 125 W. PACIFIC, SUITE B-1
 TELLURIDE, COLORADO 81435

Project #: 03023 Sheet 2 of 2

PAGE 3399